

# Middle Georgia: Macon to Griffin

An expansion of the SSE4 methane (natural) gas pipeline has been proposed that stretches from Enterprise Mississippi to Augusta, Georgia. Expansion includes digging up the existing pipeline all along the route and also expanding and/or adding compressor stations all along the route. You can learn more about the entire project here: <https://bit.ly/SSE4impact>

The map below shows impacted zip codes along the pipeline route. Red lines indicate the sections of the pipeline that are to be expanded, and red squares indicate compressor stations that are to be modified for increased capacity. Congregations within the impacted counties are shown as yellow circles. Additionally, cemeteries, childcare, schools and healthcare facilities that are within 2 miles of the expansion can be found on the map as illustrated in the legend.

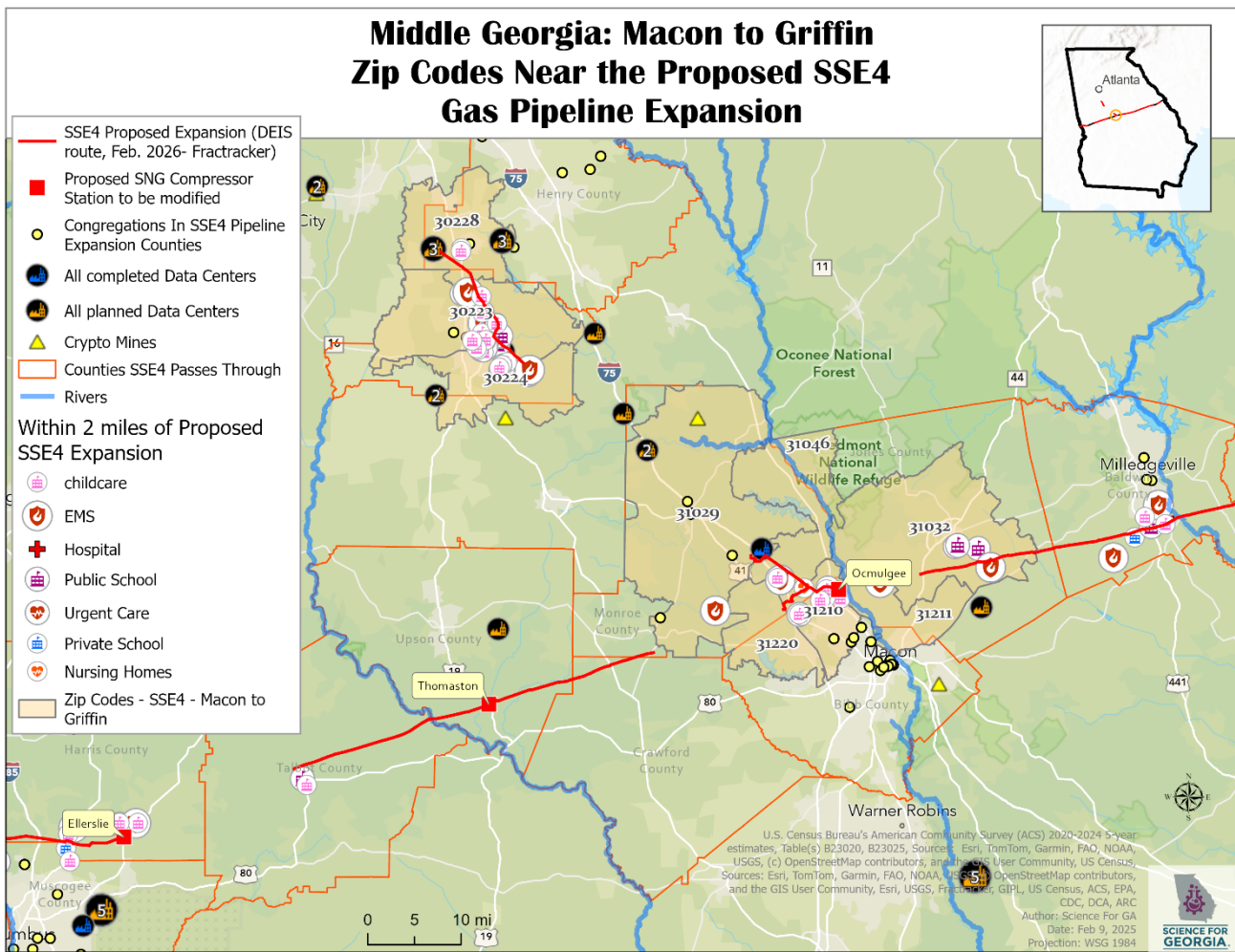


Figure 1. Zip codes surrounding the expansion route.

## Quick Facts about Zip codes along the pipeline expansion route

- While the average of the incomes of the zip codes in the map above is \$74,335.33 and the median income is \$78,234.00, the median income varies widely between the zip codes. The lowest median income in zip code 31211 located in Macon reports \$48,438.00, and the highest is 31046 in Juliette reporting \$103,722.00.
- In the Blast Zone, Bibb County shows the public school Academy For Classical Education, 5665 New Forsyth Rd, Macon, the nursing home Bolingreen Health And Rehabilitation, 529 Bolingreen Drive, Macon.
- The Unemployment Rates above the state average are Bibb County is 4.2%, Spalding county reported 3.7%, Henry County reported 3.8% according to the [US Labor and Statistics](#) page for 2025. The 2025 unemployment rate for GA is 3.6% according to the [US Labor and Statistics](#) . The 2019-2023 [ACS data](#) showed the unemployment rate of 9.1 % in Census Tract 134.11 in Bibb County where the compressor station Ocmulgee is planned to be modified. The highest unemployment rate of the tracts in Middle GA along the pipeline is Census Tract 1602.01 in Spalding County. US Labor and Statistics Unemployment Rates by Tract were not available for 2025.
- 21 of the 22 tracts within 2 miles of the pipeline have rates of Asthma equal or higher than the GA [state average](#) rate of 9.6%. Increasing capacity for compressor stations and power plants means an increase in air pollution including, particulates and ozone, that cause or exacerbate [asthma](#).

Below we provide more information for zip codes that are in the pipeline path Macon to Griffin. We present a series of maps and tables, focusing on:

1. Regional Economics:
  - a. Household income, home value, faith communities, and schools.
  - b. Unemployment, internet access, and federal opportunity zones
2. Regional Health:
  - a. Demographics and health insurance coverage
  - b. Health Vulnerability Flags: Asthma, Cancer, Heart Disease, Mental Health
3. Regional Environment
  - a. Cropland, watersheds, and drinking water conservation areas

## Regional Economics

The Median income for the state of GA is \$79,991 according to the [US Census](#). The median income for the zip codes in the map above is \$78,234.00. The median home value is \$252,395.00.

**Census Bureau Median Family Income By Family Size (\* Add \$11,100 for each individual in excess of 4.)**

	<b>FAMILY SIZE</b>			
<b>STATE</b>	<b>1 EARNER</b>	<b>2 PEOPLE</b>	<b>3 PEOPLE</b>	<b>4 PEOPLE *</b>
Georgia	\$62,401	\$81,309	\$98,564	\$114,618

[https://www.justice.gov/ust/eo/bapcpa/20250401/bci\\_data/median\\_income\\_table.htm](https://www.justice.gov/ust/eo/bapcpa/20250401/bci_data/median_income_table.htm)

Much of the pipeline is in designated Priority Ecological Areas which mean that they “are [protected](#) by some type of conservation or ecosystem management program...” Georgia Department of Natural Resources refers to this Southeastern Ecological Framework for regional [planning](#) and development.



**Known Schools or Childcare Facilities within 2 miles of the pipeline:**

Macon Area	Spalding and Henry Counties
1. BIBB COUNTY SCHOOL DISTRICT - HOWARD MIDDLE SCHOOL	1. BRIGHT STAR AT GREEN VALLEY
2. CHILDCARE NETWORK NUMBER 228	2. C.H.A.R.M.S. AFTER SCHOOL CENTER
3. KINETIX HEALTH CLUB / KIDNETIX	3. COMMUNITY MINISTRIES LEARNING CENTER
4. LITTLE ANGELS LEARNING AND DAYCARE CENTER	4. EAGLES PROJECT SUMMER CAMP
5. MEN ABOUT CHANGE INC. NUMBER 2	5. FIRST BAPTIST WEEKDAY EDUCATION
6. TURNING POINT WEEKDAY PRESCHOOL	6. FIRST STEP LEARNING ACADEMY INC.
7. TURNING POINT WEEKDAY PRESCHOOL AND DAYCARE	7. GRIFFIN - SPALDING COUNTY SCHOOLS - KIDS IN ACTION ELEMENTARY
8. YOUTH SPORTS LEAGUE AT HOWARD HIGH SCHOOL	8. GRIFFIN - SPALDING COUNTY SCHOOLS - KIDS IN ACTION ELEMENTARY
9. YOUTH SPORTS LEAGUE AT HOWARD MIDDLE SCHOOL	9. GRIFFIN - SPALDING COUNTY SCHOOLS - KIDS IN ACTION ELEMENTARY
10. HOWARD MIDDLE SCHOOL	10. HOPE'S H.E.L.P. PROGRAM
11. HOWARD HIGH SCHOOL	11. HOPE'S H.E.L.P. PROGRAM AT NORTHSIDE HILLS
12. ACADEMY FOR CLASSICAL EDUCATION	12. HORIZON CHRISTIAN LEARNING ACADEMY
	13. KIDAZZLE CHILD CARE - FAA / HAMPTON
	14. KIDDIE KOTTAGE LEARNING ACADEMY LLC
	15. NEW HORIZONS NEW DIRECTIONS
	16. SKIPSTONE ACADEMY
	17. SMALL TREASURES LEARNING CENTER
	18. SPALDING COUNTY - FAIRMONT COMMUNITY CENTER
	19. SPALDING COUNTY PRE - K
	20. STEPPING STONES
	21. STEPPING STONES ACADEMY
	22. STEPPING STONES EDUCATIONAL THERAPY CENTER
	23. TAKE IT TO THE HOOP
	24. THE PREFERRED CHOICE
	25. UNIVERSITY OF GEORGIA - GRIFFIN CAMPUS
	26. MOORE ELEMENTARY SCHOOL
	27. REHOBOTH ROAD MIDDLE SCHOOL
	28. ATKINSON ELEMENTARY SCHOOL
	29. JACKSON ROAD ELEMENTARY SCHOOL

30. KENNEDY ROAD MIDDLE SCHOOL
31. JACKSON ROAD ELEMENTARY SCHOOL
32. KENNEDY ROAD MIDDLE SCHOOL
33. FUTRAL ROAD ELEMENTARY SCHOOL
34. AZ KELSEY ACADEMY
35. SPALDING HIGH SCHOOL
36. JORDAN HILL ROAD ELEMENTARY  
SCHOOL
37. BEAVERBROOK ELEMENTARY SCHOOL
38. STEPPING STONES EDUCATIONAL  
THERAPY CENTER

**Known Congregations within 2 miles of the Pipeline:**

- Mt Zion UMC Smarr

**Known Fire Departments within 2 miles of the Pipeline:**

1. Macon - Bibb County Fire Department Station 109
2. Monroe County Fire Department Station 4
3. Monroe County Fire Department Station 10
4. Spalding County Fire Department Station 2
5. Griffin Fire and Rescue Station 1
6. Spalding County Fire Department Station 6
7. Spalding County Fire Department Station 4

**Nursing Homes within 2 miles**

- Bolingreen Health And Rehabilitation
- The Cottages On Wesleyan Al
- Pruitthealth - Griffin

## Unemployment, Internet Access, Housing Costs:

Census tract geographic code	County	Percentage of persons who are unemployed	Percentage of persons without internet	Percentage of households that make less than 75,000
Census Tract 1602.01	Spalding County	15.9	4.9	53
Census Tract 705.06	Henry County	5.7	3.8	19.6
Census Tract 705.08	Henry County	8.1	0.1	25.2
Census Tract 705.07	Henry County	5.5	1.1	43.7
Census Tract 1601.02	Spalding County	1.7	9.3	69.5
Census Tract 1603	Spalding County	1.7	12	71.9
Census Tract 1604.01	Spalding County	9.6	13.1	78.3
Census Tract 1604.02	Spalding County	11.7	28.7	78.5
Census Tract 1605	Spalding County	12.1	5.4	54.4
Census Tract 705.04	Henry County	4	5.7	63.1
Census Tract 1601.01	Spalding County	5	12.7	66.8
Census Tract 134.07	Bibb County	8	7.9	65.8
Census Tract 134.11	Bibb County	9.1	1.7	55.2
Census Tract 301.01	Jones County	1.7	2.6	31.9
Census Tract 503.02	Monroe County	1.2	6.7	26.9
Census Tract 134.08	Bibb County	4	0	31.4
Census Tract 134.13	Bibb County	0.4	3	56.5
Census Tract 1602.02	Spalding County	4.5	3.5	45.5
Census Tract 1610	Spalding County	12.8	13.1	65.9
Census Tract 134.09	Bibb County	6	5	57.6
Census Tract 503.01	Monroe County	2.2	9.7	43.1
Census Tract 1608	Spalding County	3.9	10.1	85.3
Census Tract 1609	Spalding County	7.9	12.1	76.7
Census Tract 1611	Spalding County	0.9	4.3	43.2
Census Tract 1612.02	Spalding County	3.4	6	52.9

## Regional Health

The below data is from the [American Community Survey](#) (ACS) from the United States Census.

### Demographics and Health Insurance Coverage

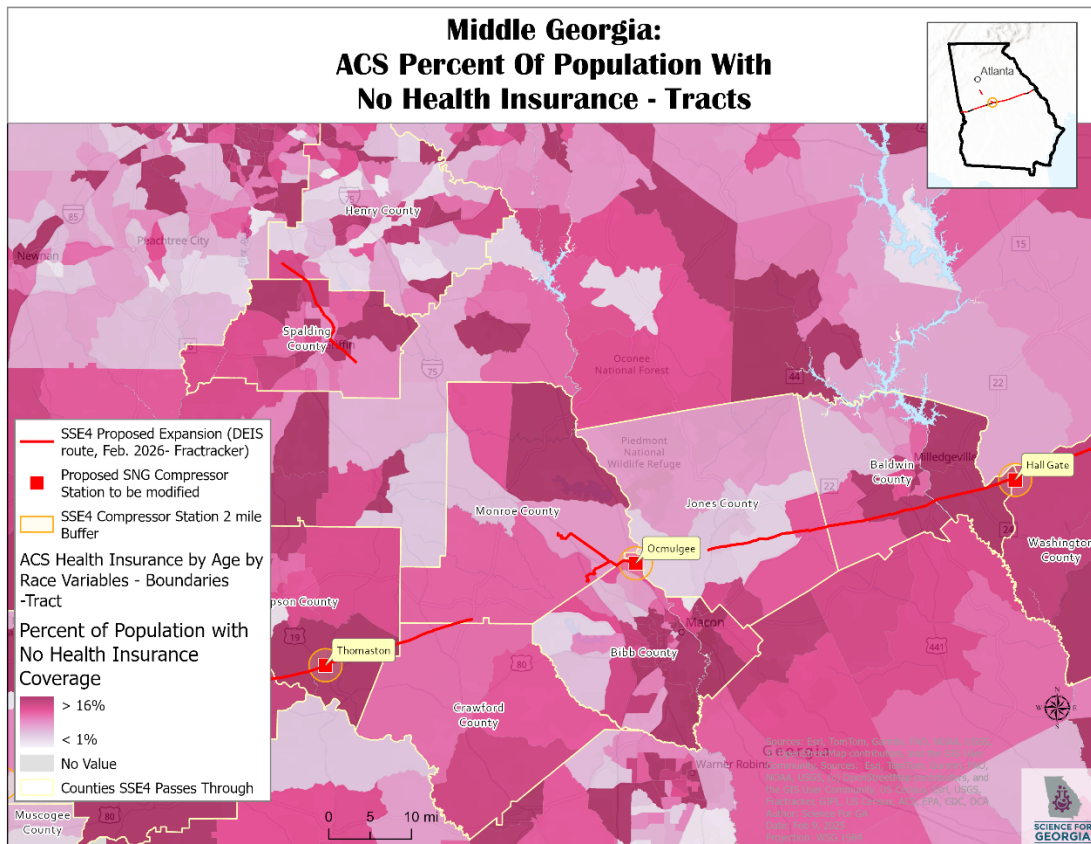
The map below shows the percentage of population that does not have health insurance. The darkest red indicates ~16% of the population

#### 5 County Statistics

The total population (Civilian Noninstitutionalized) for the counties of Bibb, Henry, Jones, Monroe, and Spalding is approximately 520,220. Of the total population for the 5 counties, 59338 (11.28%) of that total population have no insurance. Of those with no health insurance, 25,581 (43.11%) are Black or African American Alone.

#### Census Tracts in the Pipeline Path

The total population (Civilian Noninstitutional) in tracts in Middle GA that fall within 2 miles of the pipeline is 143,367. Of that total 14,715 (10.26%) do not have health insurance. 4278 (29.07%) of those without health insurance are Black or African American Alone.



<b>County</b>	<b>Total Population (Civilian Non- institutionalized)</b>	<b>% of Pop with No Health Insurance Coverage</b>	<b>% of total Pop Black or African American</b>	<b>Percent of Black or African American Alone Population With No Health Insurance Coverage</b>
Bibb County	152980	13.6 %	55.01%	13.8 %
Henry County	248301	9.8%	51.90%	7.9 %
Jones County	28382	8.6%	24.28%	6.2 %
Monroe County	28413	9.4%	20.84%	8.4 %
Spalding County	68113	13.3%	35.80%	12.1 %
	<b>Total Pop: 526,189</b>	<b>% of total Pop of 5 counties: 11.28%</b>	<b>% of total population of 5 counties: 47.55%</b>	<b>% of total No Insurance African Am or Black 43.11%</b>

## Health Vulnerability Flags: Asthma, Cancer, Heart Disease, Mental Health

- Several census tracts have rates that are considered “high” by the CDC indicated by flags for
  - Asthma
  - Cancer
  - Heart Disease
  - Mental Health
  - Diabetes

In the map below - each flag is counted with a (1) and the total number of flags for each tract is calculated. The area becomes darker purple as the number of flags increases.

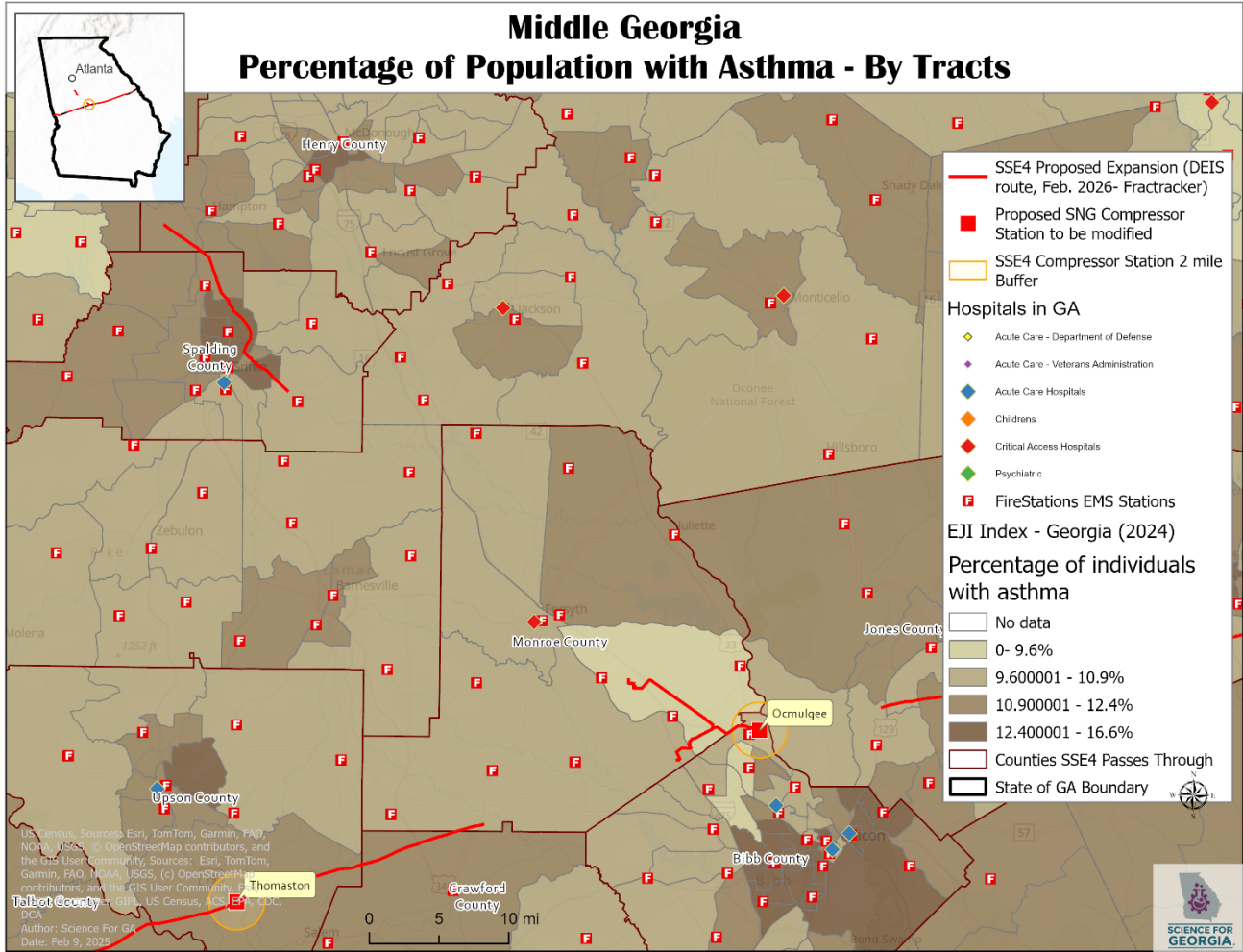
None of the tracts within 2 miles of the pipeline have a hospital.

Census tract geographic code	County	Percentage of individuals with asthma	Percentage of individuals with coronary heart disease	Percentage of individuals with cancer	Total number of health flags (out of 5)
Census Tract 705.04	Henry County	11.3	6	6.8	2
Census Tract 1611	Spalding County	10	6.8	9.5	1
Census Tract 134.08	Bibb County	9.4	5.9	9.1	0
Census Tract 134.13	Bibb County	10	5.9	8.5	0
Census Tract 1603	Spalding County	12.8	9.1	6.2	4
Census Tract 134.11	Bibb County	9.8	4.8	6.7	0
Census Tract 301.01	Jones County	9.8	6.2	9.2	0
Census Tract 1601.02	Spalding County	11.8	8.4	6.9	4
Census Tract 1609	Spalding County	12.7	9.4	6.8	4
Census Tract 1608	Spalding County	12.4	7.6	5.7	3
Census Tract 1604.01	Spalding County	13	9.3	6.5	4
Census Tract 1601.01	Spalding County	11.3	9	8.7	4
Census Tract 1602.02	Spalding County	9.7	10.6	14	3
Census Tract 705.07	Henry County	11.7	5.8	5.8	3
Census Tract 1605	Spalding County	11.3	7.1	7.5	2
Census Tract 503.02	Monroe County	9.6	7.5	11	1
Census Tract 1610	Spalding County	10.3	7.5	9	0
Census Tract 1604.02	Spalding County	13.8	10.1	5.7	4
Census Tract 1612.02	Spalding County	10.5	7.5	8.9	1
Census Tract 1602.01	Spalding County	10.5	7.9	8.8	1
Census Tract 134.09	Bibb County	10.5	7	8.3	0
Census Tract 503.01	Monroe County	10	7.6	9.8	1

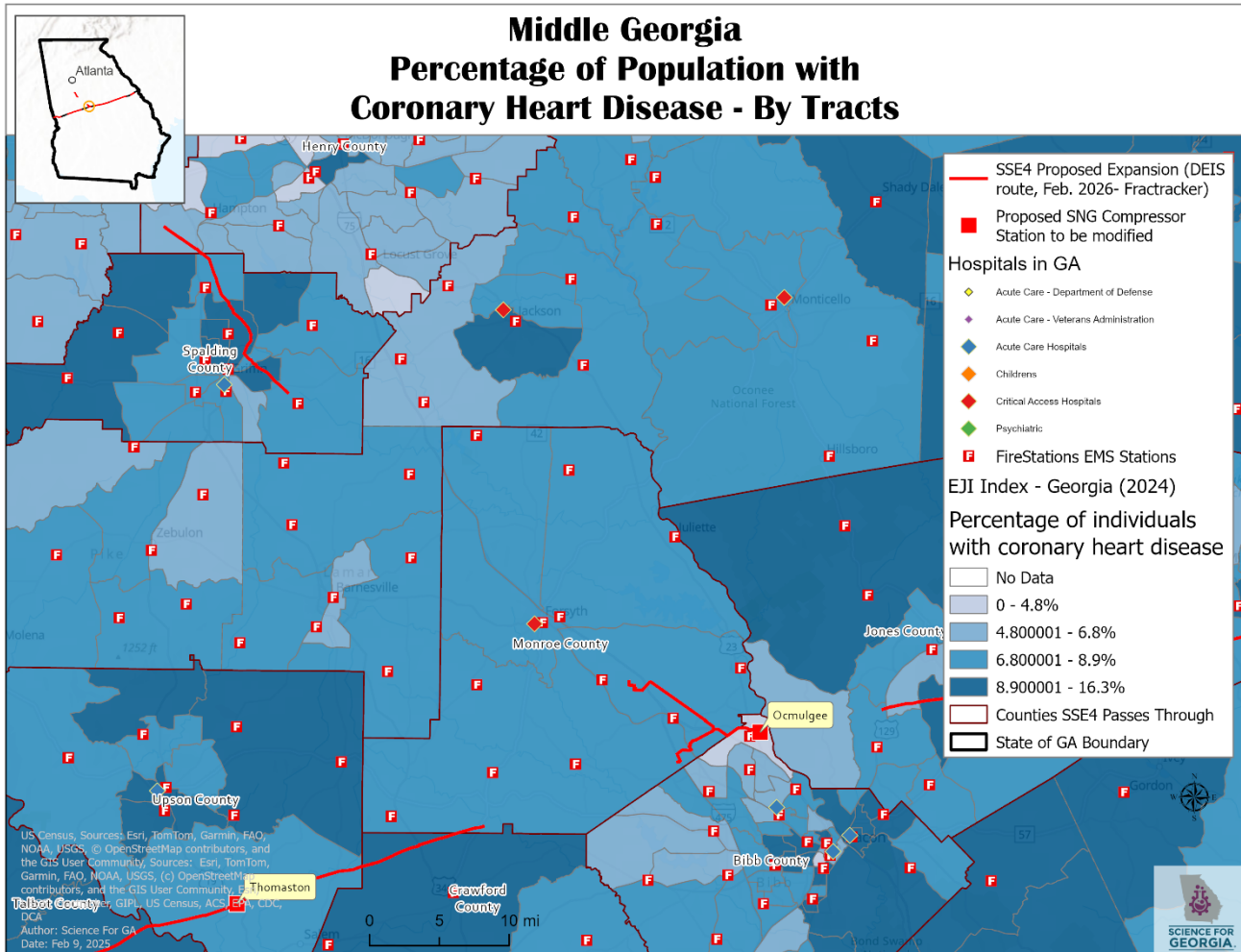
The below map shows percentage of the population with Asthma, with dark brown being the highest percentage.

Asthma is particularly concerning, as increased emissions from the compressor station combustion includes carbon monoxide, nitrogen oxide (NO<sub>x</sub>), particulate matter (PM<sub>2.5</sub> & PM<sub>10</sub>), sulfur dioxide, and volatile organic compounds (VOCs), all gross [things](#) for your lung health. Asthma percentages in all tracts are higher than the Asthma [Average for State of GA](#) which is 9.6%.

In addition to particulate matter causing lung irritation and asthma attacks, a 2023 Geohealth [study](#) concerning compressor stations and air pollution found that “NO<sub>x</sub> and VOCs react in the atmosphere to produce ozone, which aggravates human respiratory conditions like asthma.” While the [EPA](#) Toxic Release Inventory (TRI) reports show levels of air pollution lower than the regulated limits at compressor station sites, the Geohealth study notes that inconsistent testing and refusal to factor in excessive pollution during “blowdowns,” or when the compressor needs to release pressure so the facility doesn’t blow up, do not provide the community accurate information of potential health harms.



The map below shows the percentage of individuals with Coronary Heart Disease, with dark blue being the highest percentage.

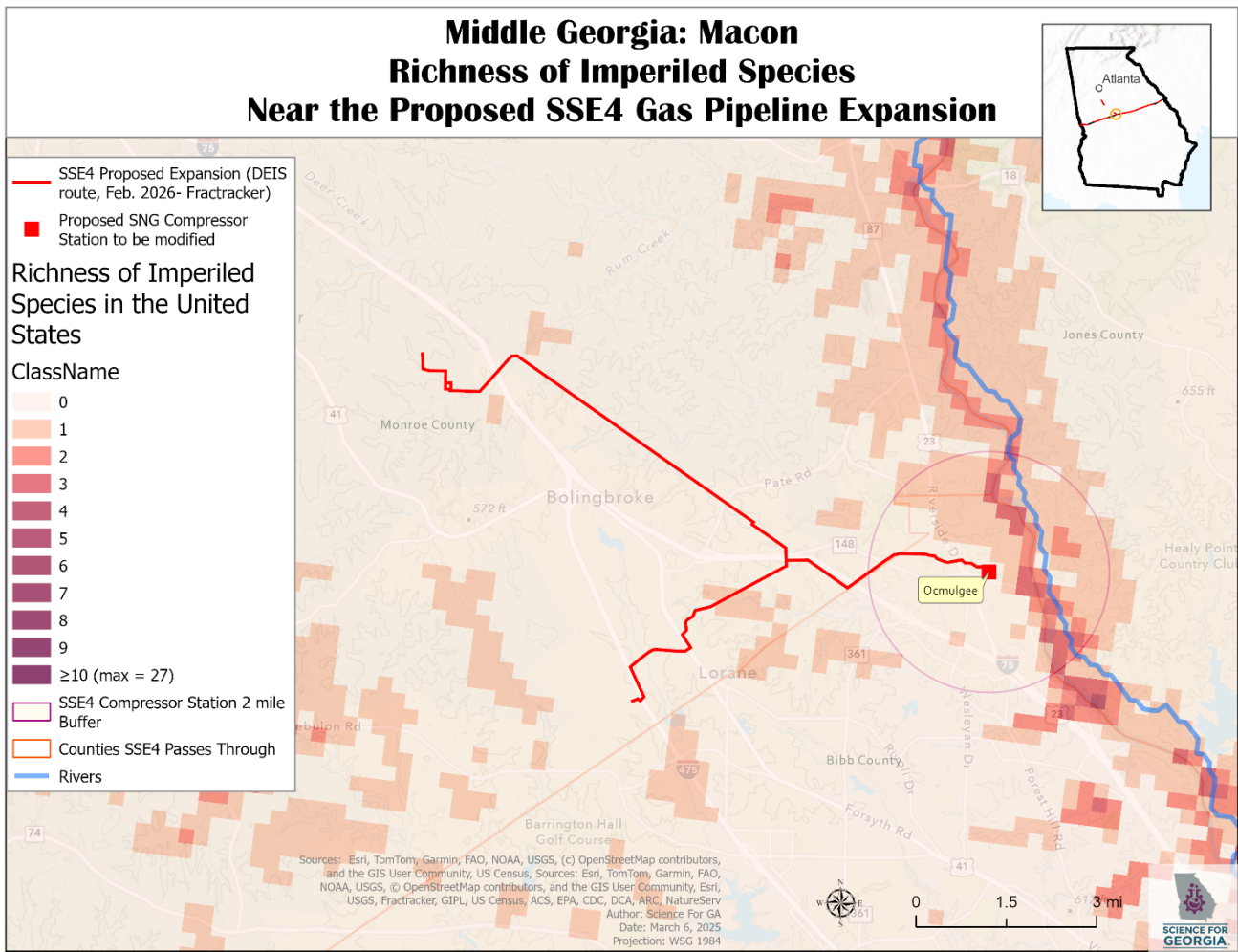


The number one cause of death in Georgia is cardiovascular disease according to the GA Department of Health. The dark red tracts on the map below that are within zip code 30833 in Jefferson County have the highest rates of Coronary Heart Disease of the tracts shown above on the pipeline path. The same area also has the highest percentage of population with asthma, diabetes, and highest percentage of population reporting not good mental health. Additional gas powered facilities will increase air pollution and, with it, raise the risk of coronary heart disease through increased emissions. Health emergency risk rises in areas of constant air pollution from combustion, particularly during heat events.



While the most prevalent crops in the path of the pipeline on the east side of the state are cotton, peanuts, and corn, the west side is home to forests that are home to endangered species. Studies have shown that air pollution, specifically [nitrogen and sulfur](#), can cause [forest stress](#) that results in decreased growth and habitat alteration.

The below map shows areas of endangered species near the Macon expansion using data from NatureServ shared through their ESRI layer [Richness of Imperiled Species](#) which identifies “areas of high potential value for on-the-ground biodiversity protection efforts.” As infrastructure for data centers, this creates a road to development antithetical to the protected status of this area.



Additionally, a [meta-analysis](#) in 2022 of 34 studies found “increased erosion potential caused by decreased aggregate stability (−44.8%)” connected to pipeline installation posing additional stability risk to these forests.

## Next Steps

There will be opportunities to speak up formally, but in the meantime:

- Check out [bit.ly/SSE4impact](https://bit.ly/SSE4impact) – and sign up to stay updated.
- Tell your elected officials that they should speak up to FERC and oppose this!

### GA schedule for OPP public meetings

<b>Date and Time</b>	<b>Location</b>
<b>February 23, 2026</b> 5:00 pm - 7:00 pm CST	American Legion Hut, 14051 Hwy 15 South, Decatur, MS 39327
<b>February 24, 2026</b> 5:00 pm - 7:00 pm CST	The Warehouse, Industrial Venue, 212 N. Academy Ave., Butler, AL 36904
<b>February 25, 2026</b> 5:00 pm - 7:00 pm CST	Carl C. Morgan, Convention Center, 211 Washington Street, Selma, AL 36701
<b>February 26, 2026</b> 5:00 pm - 7:00 pm CST	Tuskegee Municipal Complex, 101 Fonville Street, Tuskegee, AL 35083
<b>March 2, 2026</b> 5:00 pm - 7:00 pm CST	Wister Gardens, 1440 Hwy 7 South, Belzoni, MS 39038
<b>March 3, 2026</b> 5:00 pm - 7:00 pm CST	Old Town Station, 410 Old Ethel Road, Kosciusko, MS 39090
<b>March 4, 2026</b> 5:00 pm - 7:00 pm CST	Copeland Center, 4501 4th St., Meridian, MS 39307
<b>March 5, 2026</b> 5:00 pm - 7:00 pm EST	Harris County Community Center, 7509 GA-116, Hamilton, GA 31811
<b>March 9, 2026</b> 5:00 pm - 7:00 pm EST	Hampton Inn & Suites Macon I-75 N, 3954 River Place Dr., Macon, GA 31210
<b>March 10, 2026</b> 5:00 pm - 7:00 pm EST	The Pringle Building, 114 East Haynes St., Sandersville, GA 31082
<b>March 11, 2026</b> 5:00 pm - 7:00 pm EST	Holiday Inn Express, 1361 N. Expressway, Griffin, GA 30223

Please note that comment sessions do not include a formal project presentation; rather

Revised July 31, 2024

## **Summary Overview of Environmental Burden Indicators Featured in EJScreen**

This section describes the environmental burden indicator data used in EJScreen. EJScreen contains

these 13 environmental burden indicators:

### 1. Particulate Matter 2.5

- o PM 2.5 levels in air measured using an annual average.

### 2. Ozone

- o Ozone annual mean top 10 of daily maximum 8-hour concentration in air.

### 3. Nitrogen Dioxide (NO<sub>2</sub>)

- o Average annual nitrogen dioxide (NO<sub>2</sub>) levels expressed as part per billion (by volume).

### 4. Diesel Particulate Matter

- o Diesel PM level in air.

### 5. Toxic releases to air

- o RSEI modeled toxicity-weighted concentrations in air of TRI listed chemicals.

### 6. Traffic proximity and volume

- o Count of vehicles (annual average daily traffic [AADT]) at major roads within 10 kilometers (km), divided by distance in km.

### 7. Lead paint

- o Percent of housing units built before 1960.

### 8. Superfund proximity

- o Count of Superfund sites (proposed and final NPL sites and SAA sites) within 10 km, each divided by distance in km.

### 9. RMP facility proximity

- o Count of RMP (potential chemical accident management plan) facilities within 10 km, each divided by distance in km.

### 10. Hazardous waste proximity

- o Count of hazardous waste management facilities (TSDFs and LQGs) within 10 km, each

