

Columbus to Crawford County

An expansion of the SSE4 methane (natural) gas pipeline has been proposed that stretches from Enterprise Mississippi to Augusta, Georgia. Expansion includes digging up the existing pipeline all along the route and also expanding and/or adding compressor stations all along the route. You can learn more about the entire project here: <https://bit.ly/SSE4impact>

The map below shows impacted zip codes along the pipeline route. Red lines indicate the sections of the pipeline that are to be expanded, and red squares indicate compressor stations that are to be modified for increased capacity. Congregations within the impacted counties are shown as yellow circles. Additionally, cemeteries, childcare, schools and healthcare facilities that are within 2 miles of the expansion can be found on the map as illustrated in the legend.

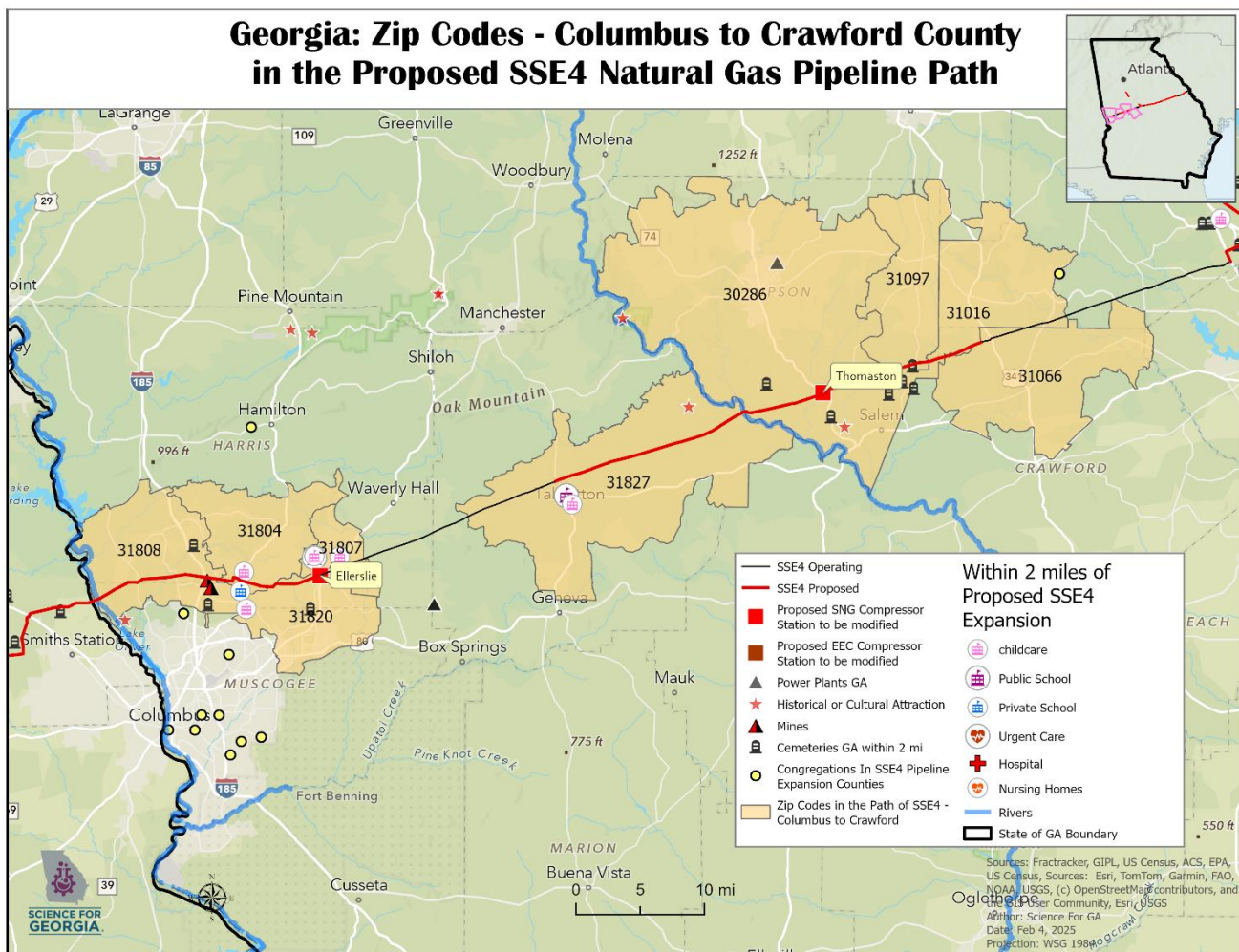


Figure 1. Zip codes surrounding the expansion route.

Quick Facts about Zip codes along the pipeline expansion route

- While the average median income of the zip codes in the map above is \$77,691.56, the median income varies widely with the lowest median income in zip code 31827 in Talbotton, Talbot County of \$44,852 to the highest median income of \$107,646.00 in 31808 in Fortson, north of Columbus along the Chattahoochee.
- In the Blast Zone, Upson County contains Sneed Cemetery in zip code 31016 and a mine in Muscogee County. There are 7 schools within 2 miles of the pipeline path and no congregations.
- According to the [Atlanta Regional Commission](#), Unemployment rates in 2020 was highest in Muscogee County and Crawford County at 8.9%. The most current number of unemployed population listed on the [US Labor and Statistics](#) is 5364 (4.%). The tract with the highest Unemployment Rate from the 2020 ACS data was 12.6 % in Census Tract 9602 in Talbot County. Tract unemployment rates were not available for the current year.
- 11 of 16 Census Tracts within 2 miles of the pipeline have rates of Asthma equal or higher than the GA [state average](#) rate of 9.6%. The compressor stations of Ellerslie and Thomaston will be modified to increase capacity and the gas plant in Talbot County is adding capacity. Increasing capacity for these compressor stations and power plants means an increase in air pollution including, particulates and ozone, that cause or exacerbate [asthma](#).

Below we provide more information for zip codes that are in the pipeline path from Columbus to Crawford County. We present a series of maps and tables, focusing on:

1. Regional Economics:
 - a. Household income, home value, faith communities, and schools.
 - b. Unemployment, internet access, and federal opportunity zones
2. Regional Health:
 - a. Demographics and health insurance coverage
 - b. Health Vulnerability Flags: Asthma, Cancer, Heart Disease, Mental Health
3. Regional Environment
 - a. Cropland, watersheds, and drinking water conservation areas

Regional Economics

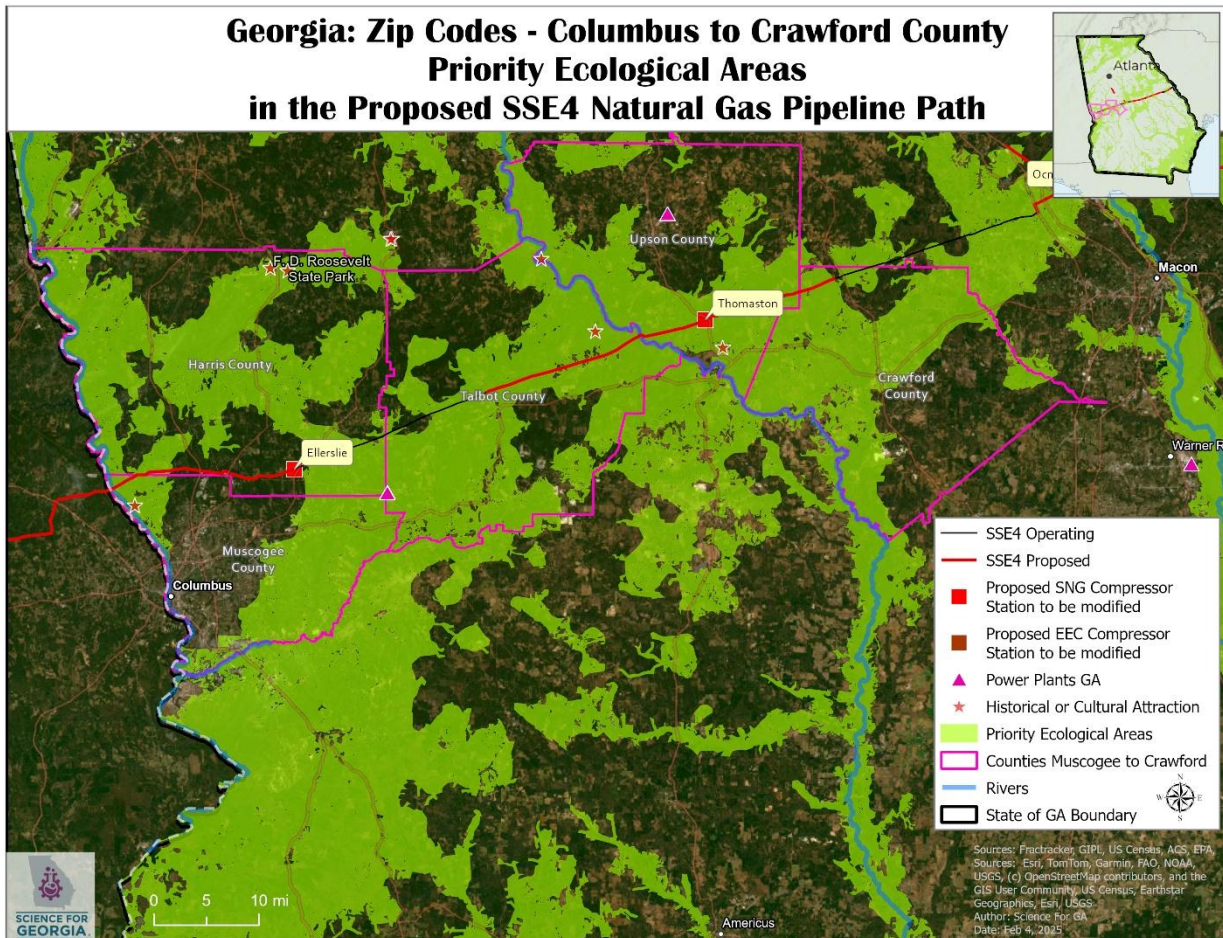
The Median income for the state of GA is \$79,991 according to the [US Census](#). Using data from Esri and the US Census, we find that the highest median income for the zip codes in the path of SSE4 is about \$66,000.

Census Bureau Median Family Income By Family Size (*Add \$11,100 for each individual in excess of 4.)

	FAMILY SIZE			
STATE	1 EARNER	2 PEOPLE	3 PEOPLE	4 PEOPLE *
Georgia	\$62,401	\$81,309	\$98,564	\$114,618

https://www.justice.gov/ust/eo/bapcpa/20250401/bci_data/median_income_table.htm

Much of the counties, Muscogee to Crawford, are designated Priority Ecological Areas which mean that they “are [protected](#) by some type of conservation or ecosystem management program...” Georgia Department of Natural Resources refers to this Southeastern Ecological Framework for regional [planning](#) and development.



Zip Code	Geographic Area Name	2025 Total Population	2025 Median Household Income	2025 Median Home Value	%Renters	2025 Total Housing Units
30286	Thomaston	24227	\$46,659.00	\$164,309.00	35.52%	10829
31016	Culloden	1641	\$79,909.00	\$267,917.00	16.53%	750
31066	Musella	1217	\$53,816.00	\$247,727.00	25.22%	571
31097	Yatesville	1375	\$57,353.00	\$220,455.00	19.02%	615
31804	Cataula	6289	\$105,185.00	\$322,642.00	7.53%	2363
31807	Ellerslie	2770	\$101,517.00	\$301,646.00	8.70%	989
31808	Fortson	9275	\$107,646.00	\$325,084.00	17.38%	3475
31820	Midland	13542	\$102,287.00	\$335,096.00	14.50%	5104
31827	Talbotton	1649	\$44,852.00	\$161,047.00	18.02%	899

Table 1 Data downloaded from ESRI Federal Data using data from the US Census Bureau TIGER

Total Population of the Zips Codes along Pipeline Path: 61,985

Mean Income: \$77,691.56

Median Home Value: \$260,658.11

Known Schools or Childcare Facilities within 2 miles of the pipeline:

- Pierce Chapel Preschool, 5122 Pierce Chapel Road, Midland 31820 (Muscogee, County)
- Emanuel Preparatory School Of Math And Science, 10107 Veterans Pkwy, Midland 31820 (Muscogee, County)
- Growing Gardens Learning Center, 815 Us Highway 27, Cataula 31804 (Harris County)
- Bethesda Baptist Church Childcare Center, 3830 Ga Hwy 85, Ellerslie 31807 (Harris County)
- Pine Ridge Elementary, 15750 Georgia Highway 315, Ellerslie 31807 (Harris County)
- Central Elementary/High School, 945 N Washington Ave, Talbotton 31827 (Talbot County)
- Harmon Head Start At Talbot, 159 Park Road, Talbotton 31827 (Talbot County)

Known Congregations within 2 miles of the Pipeline:

None

Unemployment, Internet Access, Housing Costs:

Census tract geographic code	County	Percentage of persons who are unemployed	Percentage of persons without internet	Percentage of households that make less than 75,000 who are considered burdened by housing costs (i.e., pay greater than 30% of monthly income on housing expenses)
Census Tract 101.10	Muscogee County	4.7	No data	11.8
Census Tract 9602	Talbot County	6.5	35.2	26.8
Census Tract 101	Upson County	5.5	26.1	17.2
Census Tract 103.01	Muscogee County	3.2	6.1	15.4
Census Tract 106	Upson County	1.5	41.3	23
Census Tract 1204.03	Harris County	2.9	4.8	18.9
Census Tract 1204.04	Harris County	1.4	23.2	18.4
Census Tract 102.07	Muscogee County	3.9	11.4	5.8
Census Tract 102.08	Muscogee County	8.6	3.3	18.9
Census Tract 102.06	Muscogee County	1.5	6	23.1
Census Tract 1204.01	Harris County	2.9	13.5	18.6
Census Tract 1203.02	Harris County	5.6	10.8	18.8
Census Tract 103	Upson County	1.9	18.4	20.9
Census Tract 102.09	Muscogee County	0.2	7.5	15.6
Census Tract 701	Crawford County	7.8	40.8	22.1
Census Tract 503.01	Monroe County	1.1	11.7	11.3

Regional Health

The below data is from the [American Community Survey](#) (ACS) from the United States Census.

Demographics and Health Insurance Coverage

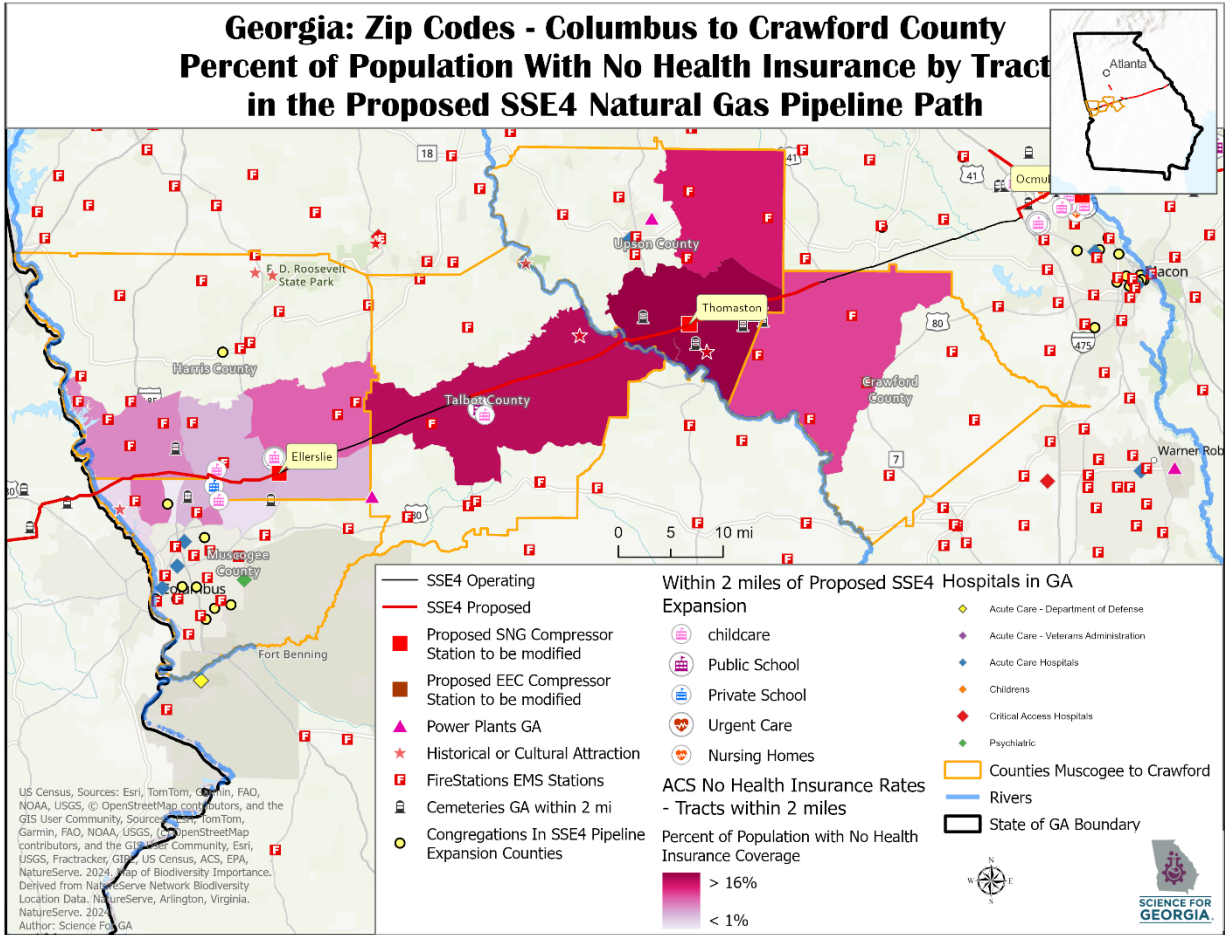
The map below shows the percentage of population that does not have health insurance. The darkest red indicates ~16% of the population

5 County Statistics

The total population (Civilian Noninstitutionalized) for Muscogee, Harris, Talbot, Upson and Crawford, according to the ACS health insurance data, is 274,793. Of the total population for the 5 counties, 29,699 (10.81%) of those have no insurance. 12,273 (40.32%) of those with no health insurance are Black or African American Alone.

Tracts in the Pipeline Path

The total population (Civilian Noninstitutional) in tracts that fall within 2 miles of the pipeline is 55,076. Of that total 3,868 (7.02%) do not have health insurance. 819 (21.17%) of those without health insurance are Black or African American Alone.



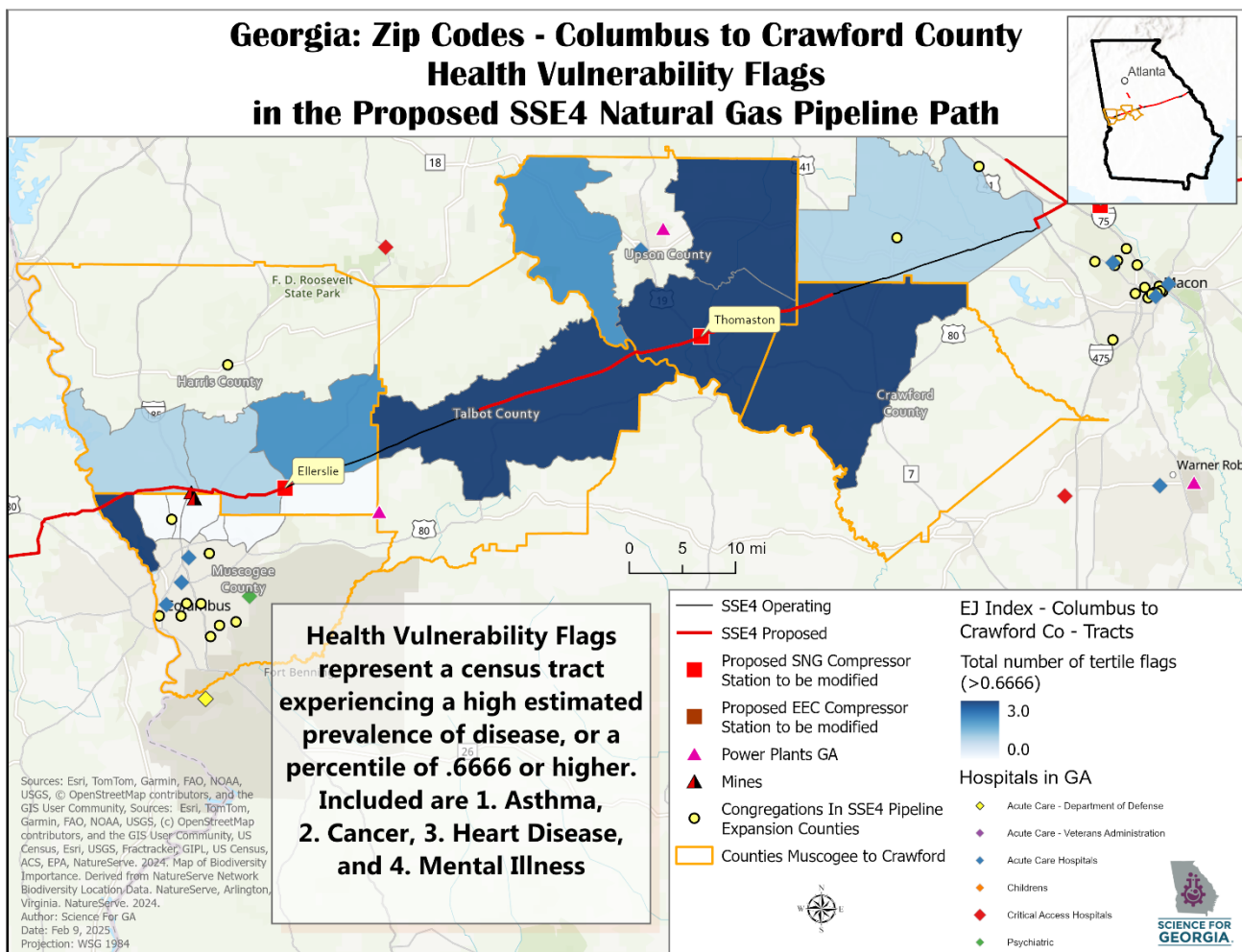
Zip	County	Total Population (Civilian Non- institutionalized)	% of Pop with No Health Insurance Coverage	% of total Pop Black or African American	Percent of Black or African American Alone Population With No Health Insurance Coverage
	Crawford County	12039	11.8 %	21.46%	9.9 %
	Harris County	34806	7 %	15.63%	5.6 %
	Muscogee County	194801	11.3 %	47.75%	11.2 %
	Talbot County	5717	12.6 %	55.34%	11.3 %
	Upson County	27430	11.5 %	26.61%	12.5 %
		Total Pop: 274,793	% of total Pop of 5 counties: 10.81%	% of total population of 5 counties: 40.58%	41.32%

Health Vulnerability Flags: Asthma, Cancer, Heart Disease, Mental Health

- Several census tracts have rates that are considered “high” by the CDC indicated by flags for
 - Asthma
 - Cancer
 - Heart Disease
 - Mental Health

In the map below - each flag is counted with a (1) and the total number of flags for each tract is calculated. The area becomes darker blue as the number of flags increases. The tracts located in Muscogee, Talbot, Upson and Crawford Counties have 3 flags.

None of the tracts within 2 miles of the pipeline have a hospital.

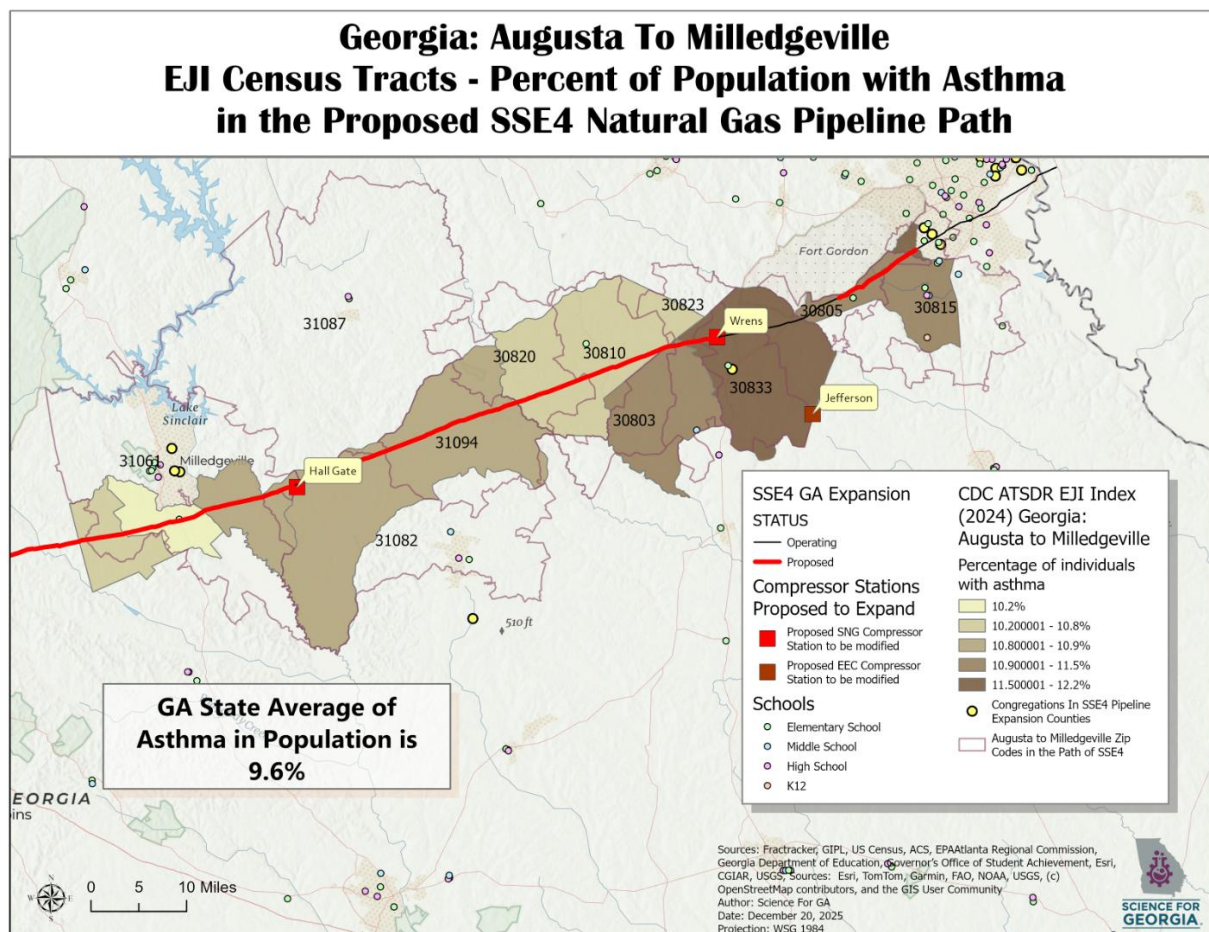


Census tract geographic code	County	Percentage of individuals with asthma	Percentage of individuals with coronary heart disease	Percentage of individuals with cancer	Total number of flags
Census Tract 101.10	Muscogee County	9.3	4 %	6	0
Census Tract 9602;	Talbot County	12.1	10.6 %	8.7	3
Census Tract 101;	Upson County	10.9	9 %	9.5	3
Census Tract 103.01;	Muscogee County	8.3	8.7 %	14.6	3
Census Tract 106;	Upson County	11.3	8.6 %	8.2	3
Census Tract 1204.03;	Harris County	9.8	5.9 %	8.2	0
Census Tract 1204.04;	Harris County	10.8	7.9 %	9	2
Census Tract 102.07;	Muscogee County	9.5	6.3 %	8.8	0
Census Tract 102.08;	Muscogee County	9.2	5 %	7.6	0
Census Tract 102.06;	Muscogee County	9.3	5.7 %	8.1	0
Census Tract 1204.01;	Harris County	9.8	7 %	9.7	1
Census Tract 1203.02;	Harris County	9.6	6.7 %	9.4	1
Census Tract 103;	Upson County	10.8	8.6 %	9.9	2
Census Tract 102.09;	Muscogee County	9.7	4.6 %	6.5	0
Census Tract 701;	Crawford County	11.2	9.8 %	9.1	3
Census Tract 503.01;	Monroe County	10	7.6 %	9.8	1

The below map shows percentage of the population with Asthma, with dark brown being the highest percentage.

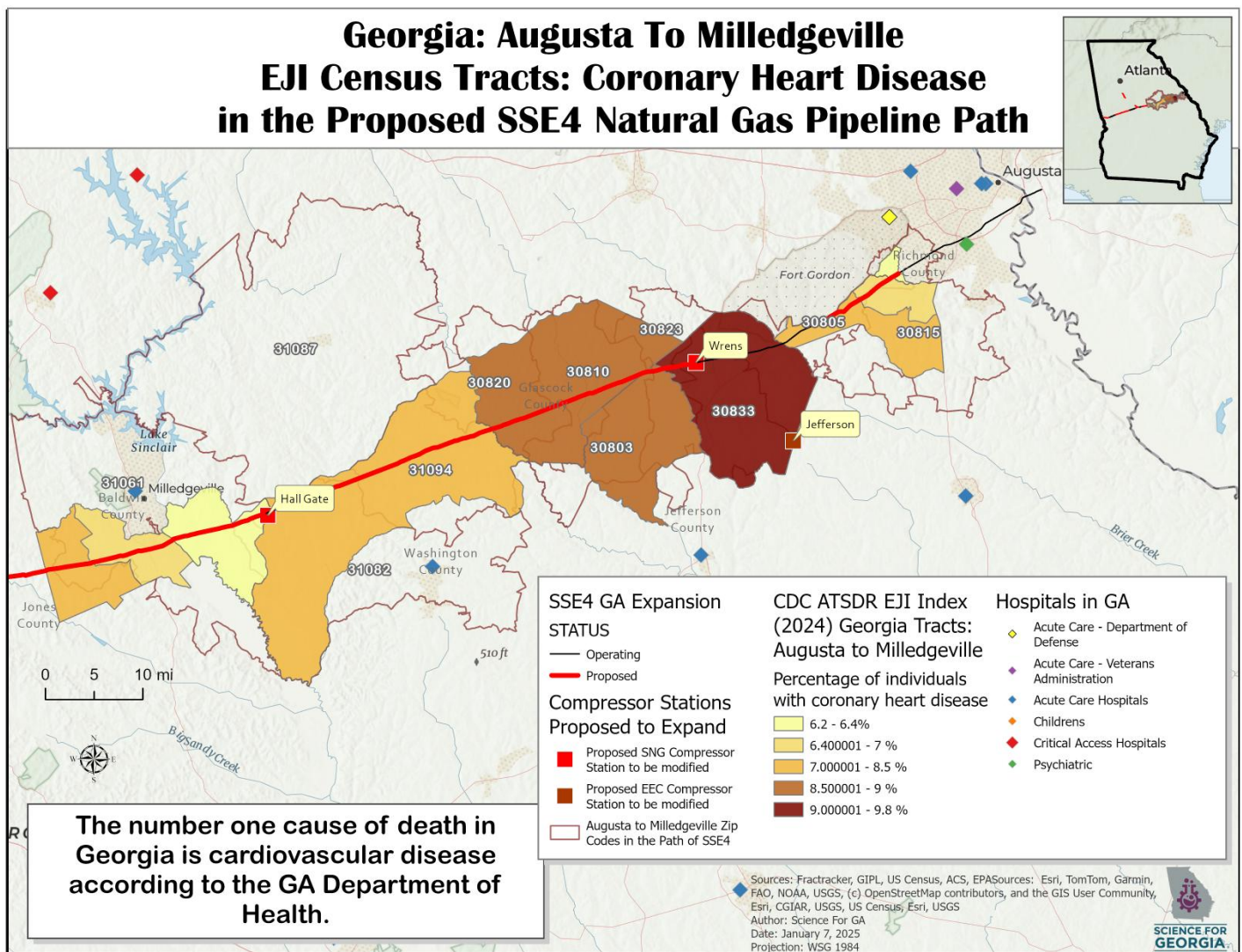
Asthma is particularly concerning, as increased emissions from the compressor station combustion includes carbon monoxide, nitrogen oxide (NOx), particulate matter (PM2.5 & PM10), sulfur dioxide, and volatile organic compounds (VOCs), all gross things for your lung health. Asthma percentages in all tracts are higher than the Asthma Average for State of GA which is 9.6%.

In addition to particulate matter causing lung irritation and asthma attacks, a 2023 Geohealth study concerning compressor stations and air pollution found that “NO_x and VOCs react in the atmosphere to produce ozone, which aggravates human respiratory conditions like asthma.” While the EPA Toxic Release Inventory (TRI) reports show levels of air pollution lower than the regulated limits at compressor station sites, the Geohealth study notes that inconsistent testing and refusal to factor in excessive pollution during “blowdowns,” or when the compressor needs to release pressure so the facility doesn’t blow up, do not provide the community accurate information of potential health harms.



The map below shows the percentage of individuals with Coronary Heart Disease, with dark red being the highest percentage.

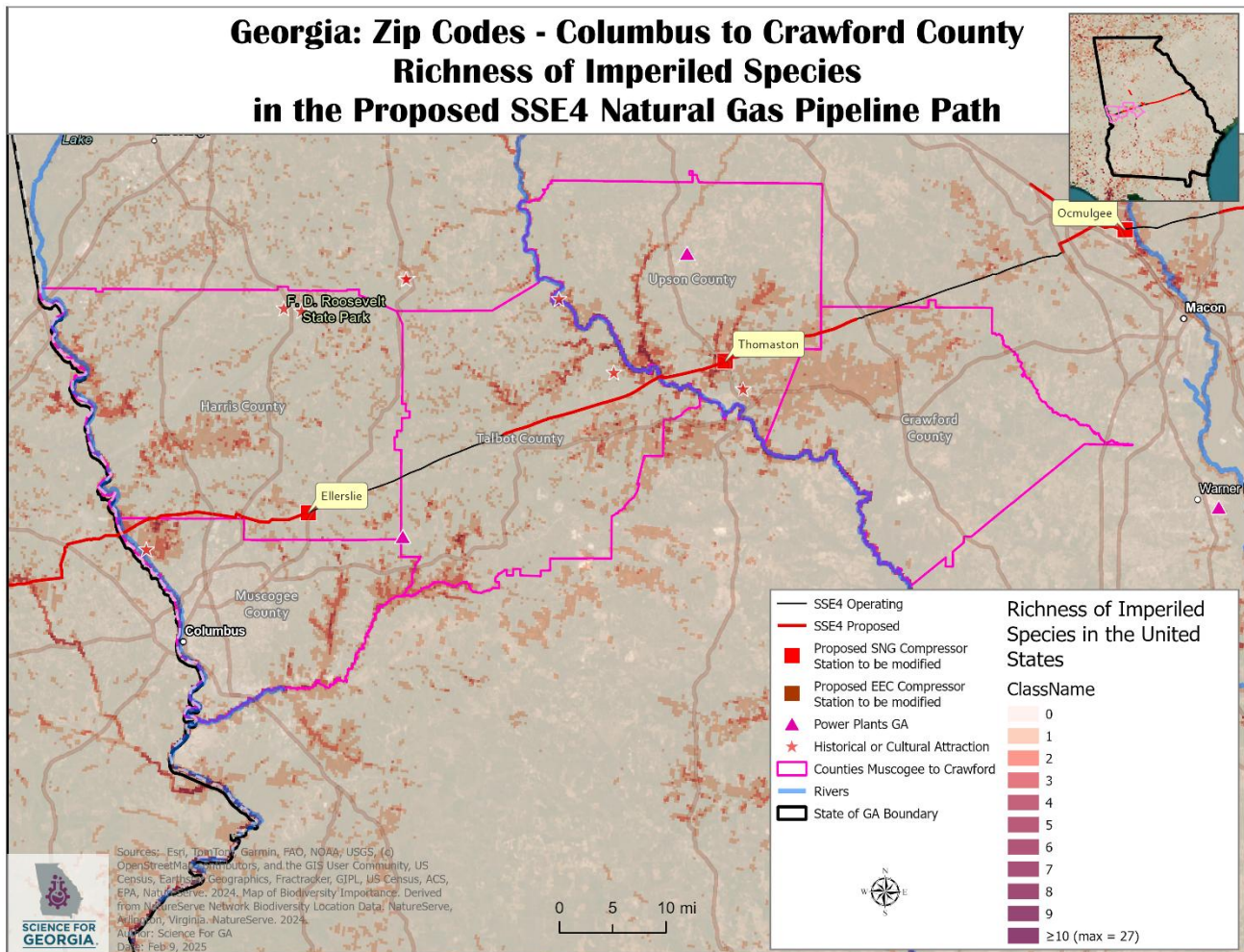
The number one cause of death in Georgia is cardiovascular disease according to the GA Department of Health. The dark red tracts on the map below that are within zip code 30833 in Jefferson County have the highest rates of Coronary Heart Disease of the tracts shown above on the pipeline path. The same area also has the highest percentage of population with asthma, diabetes, and highest percentage of population reporting not good mental health. Additional gas powered facilities will increase air pollution and, with it, raise the risk of coronary heart disease through increased emissions. Health emergency risk rises in areas of constant air pollution from combustion, particularly during heat events.



While the most prevalent crops in the path of the pipeline on the east side of the state are cotton, peanuts, and corn, the west side is home to forests that are home to endangered species. Studies have shown that air pollution, specifically [nitrogen and sulfur](#), can cause [forest stress](#) that results in decreased growth and habitat alteration.

The below map shows areas of endangered species using data from NatureServ shared through their ESRI layer [Richness of Imperiled Species](#) which identifies “areas of high potential value for on-the-ground biodiversity protection efforts.” As infrastructure for data centers, this creates a road to development antithetical to the protected status of this area.

Additionally, a [meta-analysis](#) in 2022 of 34 studies found “increased erosion potential caused by decreased aggregate stability (-44.8%)” connected to pipeline installation posing additional stability risk to these forests.



Next Steps

There will be opportunities to speak up formally, but in the meantime:

- Check out bit.ly/SSE4impact – and sign up to stay updated.
- Tell your elected officials that they should speak up to FERC and oppose this!

GA schedule for OPP public meetings

Date and Time	Location
February 23, 2026 5:00 pm - 7:00 pm CST	American Legion Hut, 14051 Hwy 15 South, Decatur, MS 39327
February 24, 2026 5:00 pm - 7:00 pm CST	The Warehouse, Industrial Venue, 212 N. Academy Ave., Butler, AL 36904
February 25, 2026 5:00 pm - 7:00 pm CST	Carl C. Morgan, Convention Center, 211 Washington Street, Selma, AL 36701
February 26, 2026 5:00 pm - 7:00 pm CST	Tuskegee Municipal Complex, 101 Fonville Street, Tuskegee, AL 35083
March 2, 2026 5:00 pm - 7:00 pm CST	Wister Gardens, 1440 Hwy 7 South, Belzoni, MS 39038
March 3, 2026 5:00 pm - 7:00 pm CST	Old Town Station, 410 Old Ethel Road, Kosciusko, MS 39090
March 4, 2026 5:00 pm - 7:00 pm CST	Copeland Center, 4501 4th St., Meridian, MS 39307
March 5, 2026 5:00 pm - 7:00 pm EST	Harris County Community Center, 7509 GA-116, Hamilton, GA 31811
March 9, 2026 5:00 pm - 7:00 pm EST	Hampton Inn & Suites Macon I-75 N, 3954 River Place Dr., Macon, GA 31210
March 10, 2026 5:00 pm - 7:00 pm EST	The Pringle Building, 114 East Haynes St., Sandersville, GA 31082
March 11, 2026 5:00 pm - 7:00 pm EST	Holiday Inn Express, 1361 N. Expressway, Griffin, GA 30223

Please note that comment sessions do not include a formal project presentation; rather,