

Our volunteers have collected over 1.5 million data points.

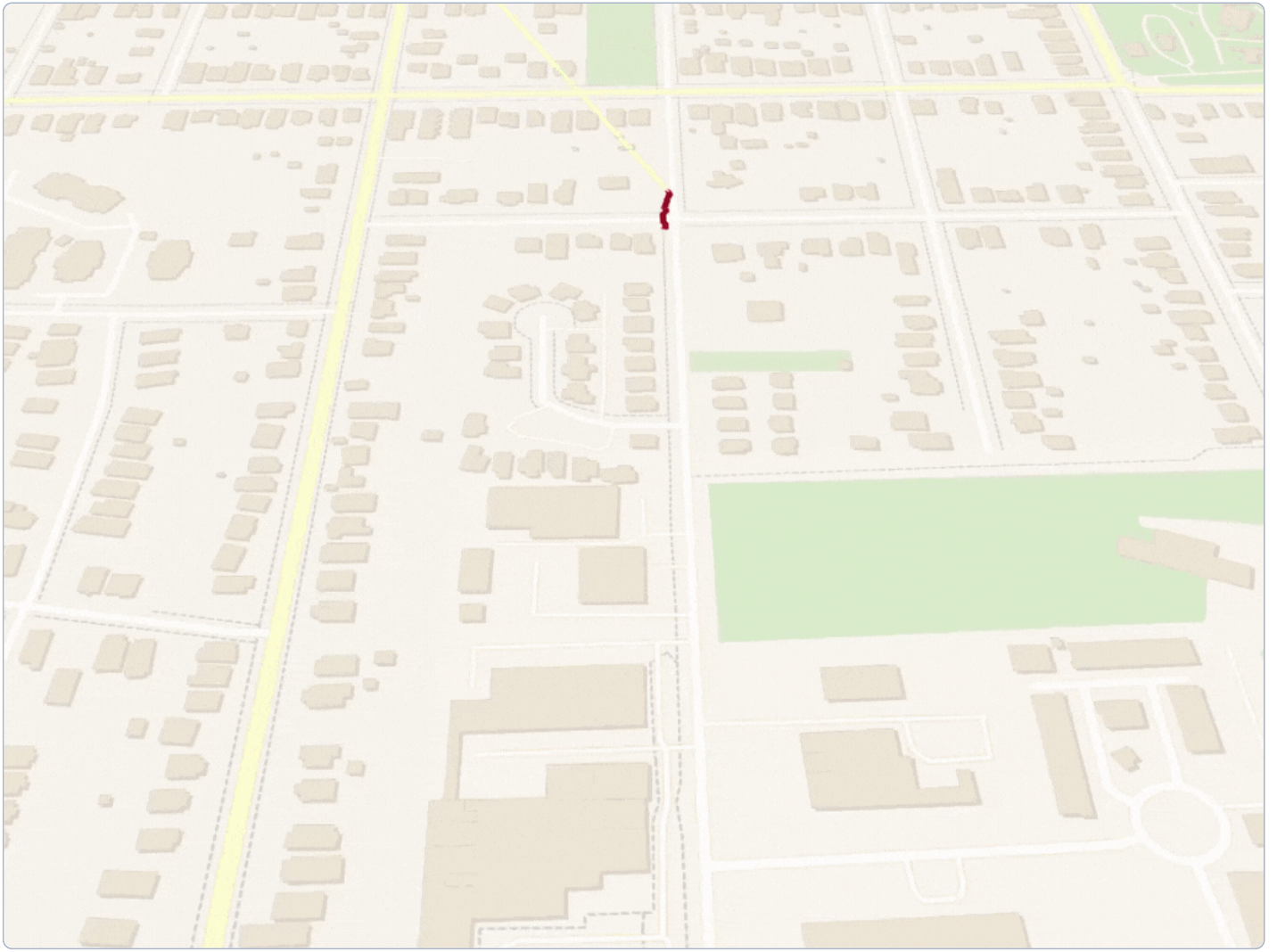
Explore the data through the maps and images below, via our ArcGIS map, or [email us to request all data.](#)

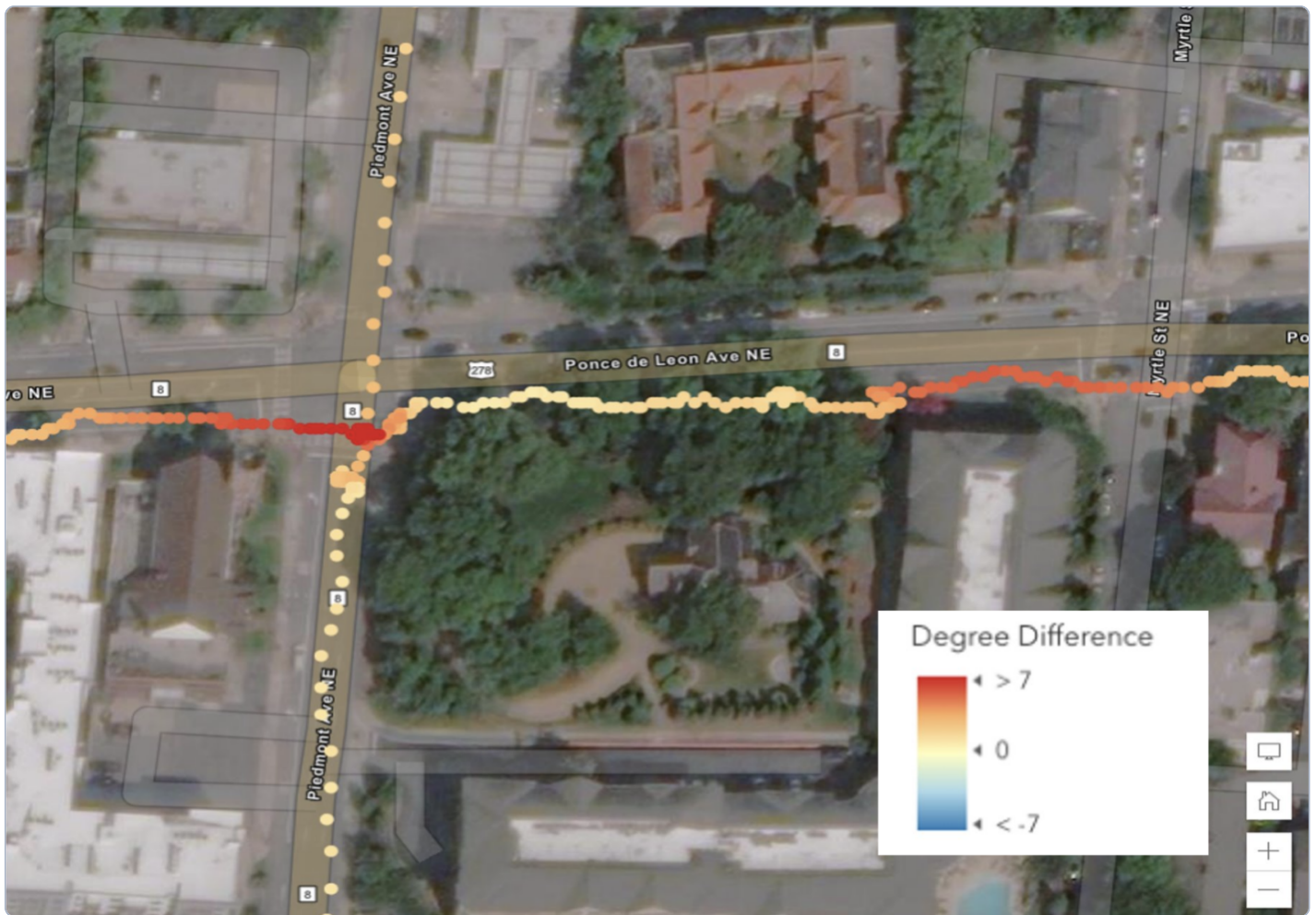
[Explore with ArcGIS](#)

How it works

Using small, mobile temperature sensors, Atlanta community members can collect street-level data in places where it matters most- where they live, work, and play. We're using these data to create detailed, high-resolution temperature maps. One volunteer's path is displayed to the right.

[Volunteer](#)





High-Resolution Data Visualization: Example Profile

At the intersection of Ponce and Piedmont Street, we see yellow dots near a patch of trees. That means that those temperatures are similar to the temperatures reported by the airport. Just outside of those trees, temperatures become warmer than the airport, indicated by the red dots. This method of data visualization helps us see where things might be hotter.

Seasonal data

Curious how temperatures change in Atlanta seasonally? The maps below show data collected in Spring, Summer, Fall, and Winter.



Spring



Summer



Fall



Winter

Our partners



Urban Climate Lab
Serve-Learn-Sustain
Global Change Program





ATLANTA
OFFICE OF
RESILIENCE



Partnership for Southern Equity
TOGETHER WE PROSPER



UrbanHeatATL

[About](#)

[News](#)

[Data](#)

[Get involved](#)

[Instagram](#)

[Twitter](#)

[YouTube](#)

[Email us](#)

[Get updates in your inbox](#)